

State of Wyoming Corner Record

(In compliance with the CORNER PERPETUATION AND FILING ACT, Wyoming Statutes, 1977, Section 36-11-101, et. seq., and the Rules and Regulations of the Board of Registration for Professional Engineers and Professional Land Surveyors)

Reverse side of this form may be used if more space is needed.

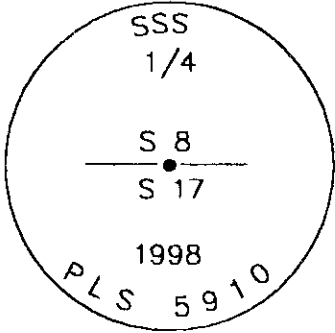
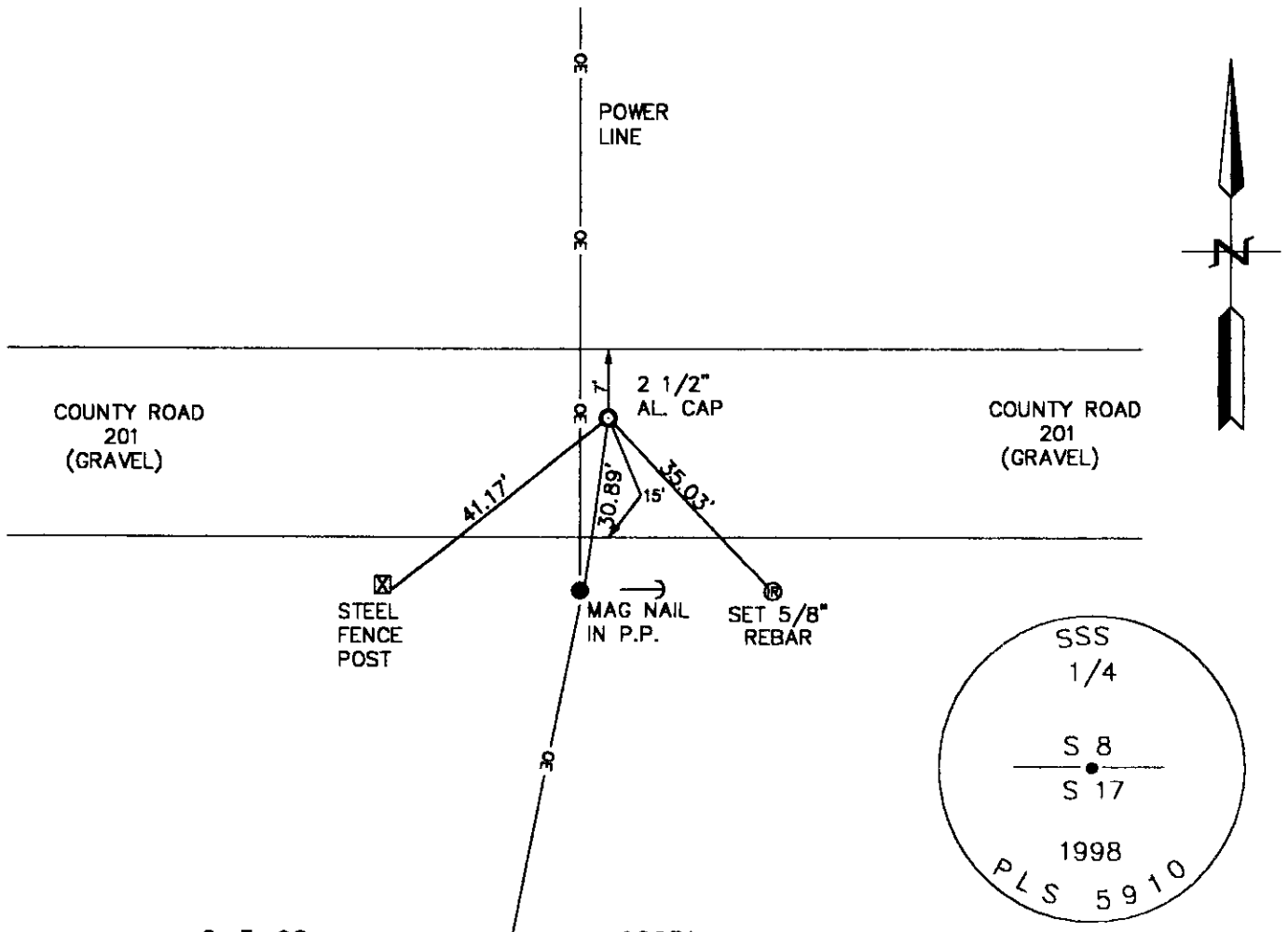
Record of original survey and citation of source of historical information (if corner is lost or obliterated). Description of corner monumentation evidence found and/or monument and accessories established to perpetuate the location of this corner. Sketch of relative location of monument, accessories, and reference points with course and distance to adjacent corner(s) (if determined in this survey). Method and rationale for reestablishment of lost or obliterated corner.

GLO RECORD: SET AN IRON POST, 3' LONG, 1" IN DIAMETER, 2 1/2' IN THE GROUND, WITH U.S. GLO BRASS CAP, FOR 1/4 SECTION CORNER.

MONUMENT FOUND: NOTHING FOUND.

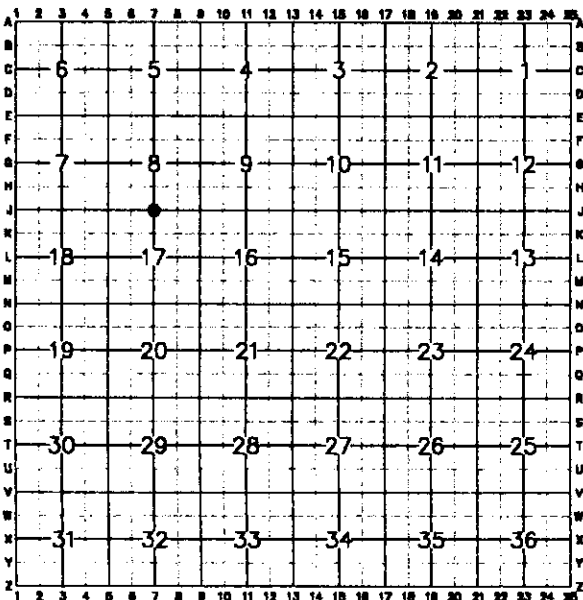
MONUMENT SET: SET A 5/8" X 24" REBAR WITH 2 1/2" ALUMINUM CAP DOWN 0.5' BELOW SURFACE OF COUNTY ROAD 201. CAP STAMPED AS SHOWN BELOW.

REFERENCES: MONUMENT LIES 1' EAST OF A N-S POWERLINE, 7' SOUTH OF THE NORTH EDGE COUNTY ROAD 201 AND 15' NORTH OF THE SOUTH EDGE OF COUNTY ROAD 201. SET A MAG NAIL AND A 5/8" REBAR FOR REFERENCES.



Date of Field Work: 2-3-98 Office Reference: 98051

CROSS INDEX DIAGRAM



Firm/Agency, Address

STEIL SURVEYING SERVICES, LLC.

1102 WEST 19th STREET

CHEYENNE WY 82001

Telephone Number: (307) 634-7273

This corner record was prepared by me or under my direction and supervision.

SEAL & SIGNATURE

[Handwritten Signature]
12/1/00

Corner Name: NORTH 1/4 Section: 17 T. 12N R. 62W; 6th P.M. Cross-Index No.: J-7
SBRPEPLS/PLSW; March 1994